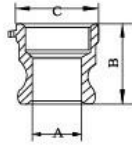


## 快速接头/CAM COUPLING



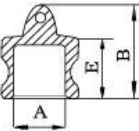
公头内丝

TYPE A



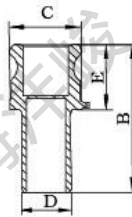
公头堵头

TYPE DP



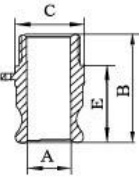
公头接胶管

TYPE E



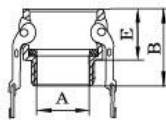
公头外丝

TYPE F



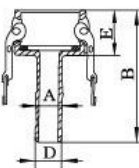
母头外丝

TYPE B



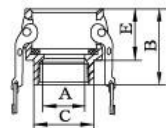
母头接胶管

TYPE C



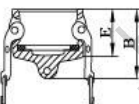
母头内丝

TYPE D



母头堵头

TYPE DC



SIZE	1/2	3/4	1	1 1/4	1 1/2	2	2 1/2	3	4	5	6
A	21.4	21.5	24	28	36	45.6	56.5	73	98	123	149.5
B	38	38	46	56	58	64	80	71	74	82	84
C	28	32	40	48	56	66	83	96	124	152	185

SIZE	1/2	3/4	1	1 1/4	1 1/2	2	2 1/2	3	4	5	6
A	21.4	21	24	28	36	45.6	56.5	73	98.1	123	149.6
B	37	37	44	53	59	63	62	74	74	76	91
E	25	24	30	38	41	43	43	51	46	48	58

SIZE	1/2	3/4	1	1 1/4	1 1/2	2	2 1/2	3	4	5	6
A	15	14	20	25	31	43	55	67	91	115	140
B	82	82	96	107.5	115	120	133	164	171	196	220
D	20	20	26.5	33.5	39.5	52	65.5	77.5	104.5	130	155
E	38	38	46	53.5	55	60	64.5	68.5	68.7	70	78
C	34	34	40	47.8	55.5	67	82	95	122	154	184

SIZE	1/2	3/4	1	1 1/4	1 1/2	2	2 1/2	3	4	5	6
A	21.4	21	24	28	36	45.6	56.5	73	98.1	123	149.5
B	55	55	66.5	78	80	90	96	104	112.5	114	129
C	28	32	40	48	56	66	82.5	96	124	152	185
E	38	38	46	56	58	64	65	71	74	72	84

SIZE	1/2	3/4	1	1 1/4	1 1/2	2	2 1/2	3	4	5	6
A	14	21	25	31	38	50	61	75	100	125	149
B	48	48.5	59	68	68	77	85	92	96	102	115
E	31.5	31.5	38.5	46	46	52	54	58.5	57.5	62	70

SIZE	1/2	3/4	1	1 1/4	1 1/2	2	2 1/2	3	4	5	6
A	14	14	20	26	31	43	55	67	92	115	140
B	91	91	103.5	116	121	135	132	164	161	185	212
D	20	20	26	33	39	52	66	77	104.5	130	155
E	31.5	31.5	38.5	46	46	52	54	58.5	57.5	60	70

SIZE	1/2	3/4	1	1 1/4	1 1/2	2	2 1/2	3	4	5	6
A	17	20	25	31	38	50	59	78	98	125	150
B	46	48.5	59	68	68	77	84	91	94	100	116
C	28	32	40	48	56	66	83	96	123.5	152	185
E	31.5	31.5	38.5	46	46	52	54	58.5	57.5	60	70

SIZE	1/2	3/4	1	1 1/4	1 1/2	2	2 1/2	3	4	5	6
B	43.5	43.5	52.5	63	65	72	72.5	88	84	92	112
E	31.5	31	38.5	46	46	51	53	60	58	60	72